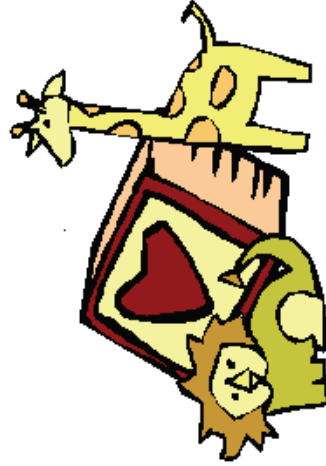


Professional Affiliations

- Hamilton and District Council of Co-Operative Preschools Corp. (HDCCPC). We actively participate in HDCCPC's Integration Program.
- Organization for Parent Participation in Childcare and Education, Ontario (OPPCEO)
- The Association of Day Care Operators of Ontario (ADCO)
- Mohawk College, ECE Department, Hamilton
- Association of Early Childhood Educators of Ontario (AECEO)
- Hamilton – Wentworth Public and Roman Catholic School Boards
- Farmers' Dell participates in "Raising the Bar on Quality", a voluntary community standards program for licensed centre-based childcare in Hamilton.



Our Rates



Annual Registration Fee
(Non-Refundable) \$ 30.00 per student

Toddler Program:
1-day/week \$ 50.00 per month

Preschool A.M. Program:
1-day/week \$ 50.00 per month
2-day/week \$ 95.00 per month
3-day/week \$131.00 per month
4-day/week \$173.00 per month

Enhanced Learning Programs

JK Readiness Program
2-day/week \$ 95.00 per month

Preschool PM Program
1-day/week \$ 50.00 per month
2-day/week \$ 95.00 per month

Program prices quoted for duty spaces only. Limited non-duty spaces are available. Extra monthly fee for non-duty = \$25 x # classes per week.

Flexible attendance is available through the alternative enrolment program. Child's attendance is billed at a daily rate. Daily rates vary from \$11.88 to \$19.00 depending upon program and parent's level of participation.

Fundraising requirement not included in rates quoted above.

Reduced rates are available when more than one child per family is enrolled in Preschool A.M. program.

FARMERS' DELL

Co-operative
PRESCHOOL



1062 Golf Club Road
P.O. Box 67
Binbrook, ON
L0R 1C0

905-692-5661

www.farmersdell.org

Farmers' Dell Co-operative Preschool

Farmers' Dell Co-operative Preschool, located in the Woodburn Centennial Hall, was founded in 1972 by concerned parents in the community of Binbrook, who realized the importance of early childhood education.

The school is a not-for-profit, charitable organization providing high quality, affordable care and education.

Farmers' Dell is a licensed preschool with a maximum capacity of 16 children per preschool class (ages 27 months – 5 years) or 10 children per toddler class (ages 18 months – 30 months).

The maximum ratios of 1:6 preschoolers and 1:4 toddlers allows for more teacher/parent/child interaction.

Our highly motivated, qualified ECE teacher uses a thematic approach to learning.

We employ a child-centred philosophy in developing imagination, creativity and independence.

Different enrolment options are available to accommodate parent's varying needs.

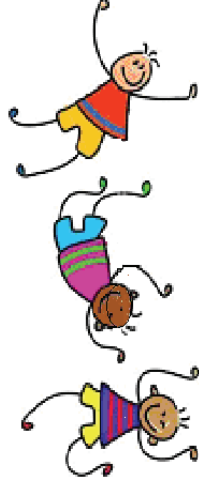
Regular classes run from September to June, closing for all public school holidays.

We are also a teaching school for Mohawk College and high school co-op students.



Our Mission Statement

We are committed to sharing the learning experience with children and their families in the co-operative way. Our philosophy is to respect each child and their family for the unique individuals that they are, while providing a positive preschool experience.



The Co-operative Experience

Co-op programs are ideal for parents who want to have direct involvement in their child's first school experience.

Parents work together as a team to operate and maintain the school. They run the school in partnership with the parent executive committee and the certified Early Childhood Educator (ECE).

To maintain low costs and quality care, parents volunteer in the classroom (frequency based on enrolment).

The co-op experience allows parents to share information and experiences about child rearing.

All duty parents must obtain a police clearance record prior to assisting in the classroom.

Our Programs

Toddler Program

Our toddler program offers a well-supervised, creative environment with age appropriate activities (such as art, music and free play) for children 18 – 30 months, which promote social, emotional, intellectual, and physical skills. 1- day program Monday 9:00 – 11:30 A.M.

Preschool A.M. Program

This program is for children 27 months – 5 years. It promotes social learning, as well as teaching self-reliance and responsibility. Children will be introduced to colours, shapes, numbers, and letters. Up to 4 days per week, Tuesday to Friday 9:00 – 11:30 A.M.

JK Readiness Program

This enhanced learning program prepares children for Junior Kindergarten. It focuses on a variety of concepts such as colours, shapes, numbers, letters, sizes, patterning, same & different, opposites, and rhyming words. It also introduces children to printing and pre-math skills. For children 3 – 4 years old. Acceptance into program based on teacher's assessment. 2-day Program Tuesday and Thursday 12:30 – 3:00 P.M.

Preschool P.M. Program

This program is only offered upon demand. We are creating a waiting list for those who are interested in afternoon classes with a curriculum that will meet the individual needs of your child. Classes will be limited to 10 children per class ages 3 – 5 years. Don't hesitate to ask us how your child can benefit from this program and add your name to the waiting list today.