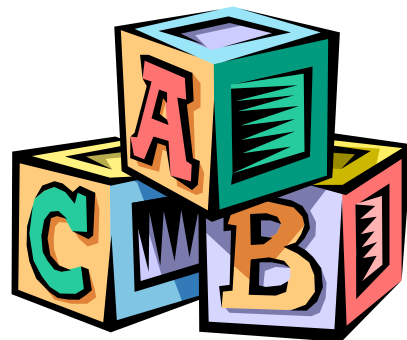
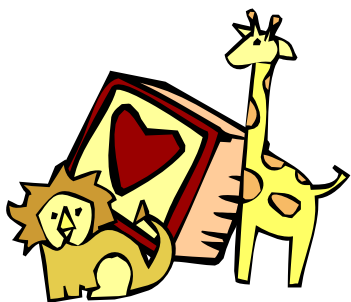


## Professional Affiliations

- Hamilton and District Council of Co-Operative Preschools Corp. (HDCCPC). We actively participate in HDCCPC's Integration Program.
- Organization for Parent Participation in Childcare and Education, Ontario (OPPCEO)
- The Association of Day Care Operators of Ontario (ADCO)
- Mohawk College, ECE Department, Hamilton
- Association of Early Childhood Educators of Ontario (AECEO)
- Hamilton – Wentworth Public and Roman Catholic School Boards
- ♦ Farmers' Dell participates in "Raising the Bar on Quality", a voluntary community standards program for licensed centre-based child care in Hamilton.



## Farmers' Dell Preschool Rates

Annual Registration Fee  
(Non-Refundable)      \$25.00    per student

### **Duty Parent:**

1-day/week	\$ 44.00	per month
2-day/week	\$ 84.00	per month
3-day/week	\$113.00	per month
4-day/week	\$151.00	per month
5-day/week	\$189.00	per month

### **Non-Duty Parent:**

1-day/week	\$ 64.00	per month
2-day/week	\$124.00	per month
3-day/week	\$167.00	per month
4-day/week	\$223.00	per month
5-day/week	\$279.00	per month

- ♦ Limited non-duty spaces available.
- ♦ Flexible attendance available through the alternative enrolment program. Child's attendance is billed at a daily rate. Daily rates vary from \$10.50 to \$17.50 depending upon parents level of participation.
- ♦ Fundraising requirement not included in rates quoted above.
- ♦ Reduced rates offered to parents with more than one child in the A.M. program.

# FARMERS' DELL CO-OPERATIVE PRESCHOOL of Glanbrook Inc.



1062 Golf Club Road,  
P.O. Box 67,  
Binbrook, ON  
L0R 1C0

905-692-5661  
[www.farmersdell.org](http://www.farmersdell.org)

## About Farmers' Dell Co-operative Preschool

Farmers' Dell Co-operative Preschool, located in the Woodburn Centennial Hall, was founded in 1972 by concerned parents in the community of Binbrook, who realized the importance of early childhood education.

The school is a not-for-profit, charitable organization providing high quality, affordable care and education.

Farmers' Dell is a licensed preschool with the capacity of 16 children per class. There is a maximum ratio of 1:6 providing more teacher/parent/child interaction.

Our highly motivated, qualified ECE teacher uses a thematic approach to learning for 27 months to 5 year olds.

We employ a child-centred philosophy in developing imagination, creativity and independence.

Different enrolment options are available to accommodate parent's varying needs.

Classes run from September to June, closing for all public school holidays.

We are also a teaching school for Mohawk College and high school co-op students.

## Our Mission Statement

We are committed to sharing the learning experience with children and their families in the co-operative way. Our philosophy is to respect each child and their family for the unique individuals that they are, while providing a positive preschool experience.



## The Co-Op Experience

Co-op programs are ideal for parents who want to have direct involvement in their child's first school experience.

Parents work together as a team to operate and maintain the school. They run the school in partnership with the parent executive committee and the certified Early Childhood Educator (ECE).

To maintain low costs and quality care, parents volunteer in the classroom (frequency based on enrolment).

The co-op experience allows parents to share information and experiences about child rearing.

All duty parents must obtain a police clearance record prior to assisting in the classroom.

## Our Programs

This program is a good introduction to  
**Preschool A.M. Program**

your child's first school experience. It promotes social learning, as well as teaching your child to become self-reliant and responsible. It also introduces your child to colours, shapes, numbers, and letters. 1 to 5-Day Program Monday-Friday 9:00 – 11:30 A.M. This program prepares children for Junior Kindergarten. It focuses on a variety

**JK Readiness P.M. Program**

of concepts such as colours, shapes, numbers, letters, sizes, patterning, same & different, opposites, and rhyming words. It also introduces children to printing and pre-math skills. 2-Day Program Tuesday and Friday 12:30 — 3:00 P.M.

This program enhances what your child will be learning in JK and SK. It focuses on Jolly Phonics, which introduces the

**JK/SK Enrichment P.M. Program**

letters of the alphabet, the formation of the letters, the phonic sound for each letter, and early literacy. Also, this program focuses on pre-math skills, recognizing numbers, the formation of numbers, counting skills, and introduces addition and subtraction. 1-Day Program offered on Wednesday and Thursday 12:30 — 3:00 P.M.